



LA35 is a powerful type actuator with 2 series: LA35C and LA35T. LA35C has max thrust 7,000 N with the stainless steel inner tube for the heavy load. LA35T has max thrust 8,000 N and has both options of aluminum or stainless inner tube for option to tolerate the bending force. It is suitable for the application of dental chairs and hospital beds which require higher push capacity.

Feature :

- 24 V permanent magnet motor.
- Thrust 4,000 N ~ 8,000 N
- Built-in limit switches.
- Stroke length : 10cm, 15cm, and 20cm.
- Elegant and compact design; small installation dimension.
- Duty cycle: Max. 5% or 1 min. of continuous usage followed by 19 min. of rest.
- Ambient temperature: +5°C to +40°C.
- Color : Gray-white.

Option :

- Back fixture position 0° or 90°, and metal or plastic back fixture is available.
- The rod eye can be grooved.
- Protection class: IP66 (not allowed to be in wash tunnels).
- Can be equipped with the reed switch or Hall Sensor function (Contact LINKAN in advance).

The years of release : 2014

LA35C Ordering Example :

LA35. 3 R - 10 - 150 + R H J

TYPE OF PLUG (Select plug that fit with control box)

- D : 2-core DIN plug
- 4D : 4-core DIN plug
- 5D : 5-core DIN plug
- J : JACK plug (standard)
- X : Without plug

BACK FIXTURE DIRECTION (The direction for installation of actuator)

- H : Horizontal (plastic, grooved)
- V : Vertical (plastic, grooved)
- A : Horizontal (plastic, solid) (700 kg) ★
- B : Vertical (plastic, solid) (700 kg) ★
- C : Horizontal (metal, grooved) (700 kg) ★
- D : Vertical (metal, grooved) (700 kg) ★

ROD EYE TYPE

- R : Grooved
- S : Standard

COLOR -: Black +: Gray-white★(MOQ 500 pc)

CABLE LENGTH

- 150 = 150 cm
- 200 = 200 cm

STROKE

- 10 = 10 cm
- 15 = 15 cm
- 20 = 20 cm

REED SWITCH

R : As the worm gear rotate one cycle, Reed switch will send out 8 signals (pulses). Thus, the controller can read signals to operate memory and parallel control.

H : Unipolar Hall Sensor ★

PITCH

- 3 : 3.0 mm (Push 7,000N/Self-lock 7,000 N)
- 6 : 6.0 mm (Push 4,000N/Self-lock 4,000 N)

ACTUATOR LA35-BASIC

The 「★」 sign is for the special specification.

LA35T Ordering Example :

LA35. 35 H - 10 - 150 + A H 5D

TYPE OF PLUG (Select plug that fit with control box)

- D : 2-core DIN plug
- 4D : 4-core DIN plug
- 5D : 5-core DIN plug
- 6D : 6-core DIN plug
- J : JACK plug (standard)
- X : Without plug

BACK FIXTURE DIRECTION (The direction of actuator installation)

- H : Horizontal
- V : Vertical

INNER TUBE TYPE

- M : Metal tube (with metal piston rod and back fixture)
- A : Aluminum tube (with plastic piston rod eye and back fixture)

COLOR - : Black ★(MOQ 500 pc) + : Gray-white

CABLE LENGTH

150 = 150 cm 200 = 200 cm

STROKE

- 10 = 10 cm
- 15 = 15 cm
- 20 = 20 cm

SIGNAL FEEDBACK

- R : As the worm wheel gear rotate one cycle, Reed switch will send out 8 signals (pulses).
- H : Unipolar Hall sensor
- T : Twin Hall sensor ★

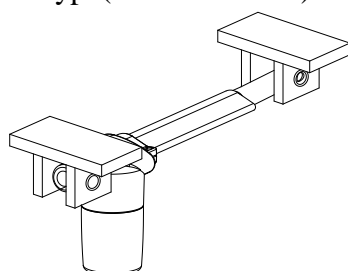
PITCH 35 : 3.5mm (Push 8,000 N/Self-locking 8,000 N)

ACTUATOR LA35-BASIC

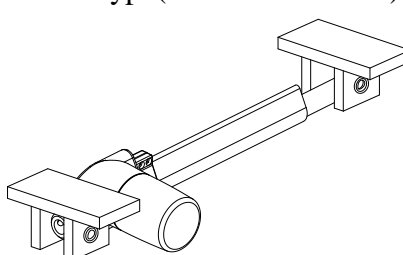
The 「★」 signal is for special speci

Back Fixture Direction (The direction of Actuator installation)

V type(Vertical install)

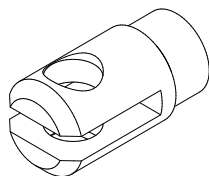


H type(Horizontal install)

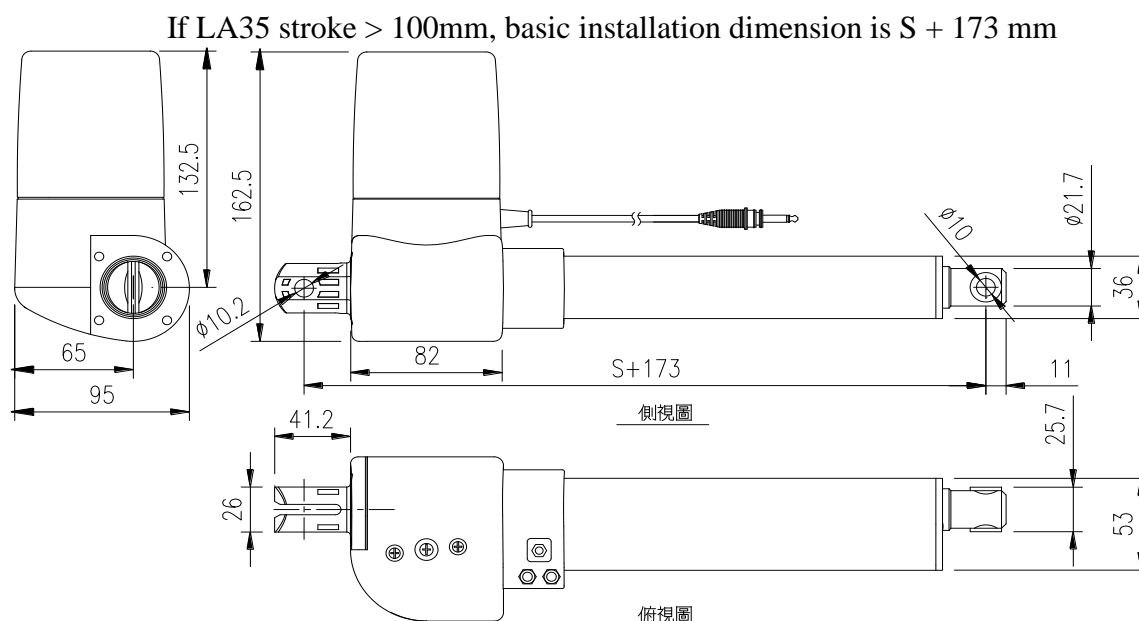


Specifications are subject to change without prior notice. It is the responsibility for the product users to determine the suitability of LINKAN A/C products for a specific application. LINKAN A/C will be responsible for replacing/ repairing defective products covered by the warranty if promptly returned to the factory. We won't undertake any responsibility except repairing.

Rod Eye Type : (Front Install Head) Option of additional accessory “R” is Groove” Type



Dimension :



※LA35C inner tube diameter: 21.7mm; LA35T inner tube diameter: 25.4mm

LA35 Installation Dimension

Actuator Stroke (mm)	100	150	200
Basic Installation Dimension (mm)	288	323	373
Stretch Stroke (mm)	388	473	573

※If the requested stroke is more than 200 mm , please discuss with LINKAN in advance.

Data & Graph:

Spindle type	Spindle Pitch (mm)	Max Load [N]		Typical Current [A]	Speed [mm/s]		Max. Self lock [N]	Voltage
		Push	Pull		Unloaded	Full load	Push	
LA35.35	3.5	8,000	6,000	4.6	5.9	3.2	8,000	LA35.35
LA35.3	3	7,000	4,000	4.8	4.5	3	7,000	LA35.3
LA35.6	6	4,000	4,000	4.6	9.3	5.7	4,000	LA35.6

(Duty cycle : 10%)

※ The data above is based on the test of the power supply. If you need the data with compatible control boxes, please contact LINKAN A/C R&D department.

Specifications are subject to change without prior notice. It is the responsibility for the product users to determine the suitability of LINKAN A/C products for a specific application. LINKAN A/C will be responsible for replacing/ repairing defective products covered by the warranty if promptly returned to the factory. We won't undertake any responsibility except repairing.