



LA31 is designed for a variety of applications, which has the strong mechanical structure, and is suitable for the furniture, beauty equipment of beauty as well as areas of homecare, medical and rehabilitation.

**Features :**

- 24 V DC permanent magnet motor.
- Thrust 1,500 N~6,000 N; Speed 3.0~16.7 mm/s.
- Built-in limited switches (Not adjustable).
- High-strength plastic housing protects motor and gear.
- Scratch and wear-resistant powder painted outer tube.
- Strong wear and corrosion resistant stainless steel inner tube.
- Steel piston rod eye.
- Zinc alloy back fixture.
- Duty cycle: Max. 10% or 2 min. of continuous usage followed by 18 min. of rest.
- Ambient temperature: +5°C to +40°C.
- Protection class: IP54.
- Color: Grey-white.
- Can be assembled with CB09.

**Options :**

- LA31 can be fitted with brake function (B) to increase the self-locking.
- Safety nut.
- Protection class: IP66 (not allowed to be in wash tunnels).
- Reed-switch.
- Quick-Release (Q).
- Extended sleeve for the back fixture (For only Quick-Release function).
- Back fixture position 0° or 90°.
- Steel groove piston rod eye.
- Fast motor (not available for the actuator with the Hall sensor).
- Can be equipped with Hall Sensor function (Contact LINKAN in advance).

**The years of release : 2002**

---

Specifications are subject to change without prior notice. It is the responsibility for the product users to determine the suitability of LINKAN A/C products for a specific application. LINKAN A/C will be responsible for replacing/ repairing defective products covered by the warranty if promptly returned to the factory. We won't undertake any responsibility except repairing.



## LA31 Ordering Example :

**LA31. 4 B M R Q - 15 - 100 + B H D**

**TYPE OF PLUG** (Notice the plug on the control box)

D : 2-core DIN plug

4D : 4-core DIN plug

5D : 5-core DIN plug

J : JACK plug

X : Without plug

**BACK FIXTURE DIRECTION** (The direction of actuator installation)

H : Horizontal V : Vertical

**TYPE OF MOTOR**

B : Standard

S : Fast (higher motor speed with smaller duty cycle)

**CABLE LENGTH**

100 = 100 cm ★ 150 = 150 cm 200 = 200 cm

**STROKE LENGTH**

10 = 10 cm

15 = 15 cm

20 = 20 cm

25 = 25 cm

30 = 30 cm ★

**QUICK RELEASE**

Q (Only for 6 mm- pitch spindle. Quick release is for CPR, ensuring the bed to return to the original position quickly by manual start)

**REED SWITCH**

R : As the worm gear rotate one cycle, Reed switch will send out 8 signals (pulses). Thus, the controller can read signals to operate memory and parallel control.

H : Unipolar Hall Sensor ★

**SAFETY NUT**

M (for avoiding main nut on the spindle breaking down and then bed sliding down suddenly; only available on spindle pitch 3 mm and 4 mm)

**BRAKE**

B (Increase self-locking power to prevent the bed from sliding down)

**SPINDLE PITCH**

3 : 3.0 mm (Push 6,000N/Self-lock 6,000 N)

4 : 4.0 mm (Push 6,000N/Self-lock 4,000 N) ("Brake" function is suggested)

6 : 6.0 mm (Push 4,000N/Self-lock 2,000 N) ("Brake" function is suggested)

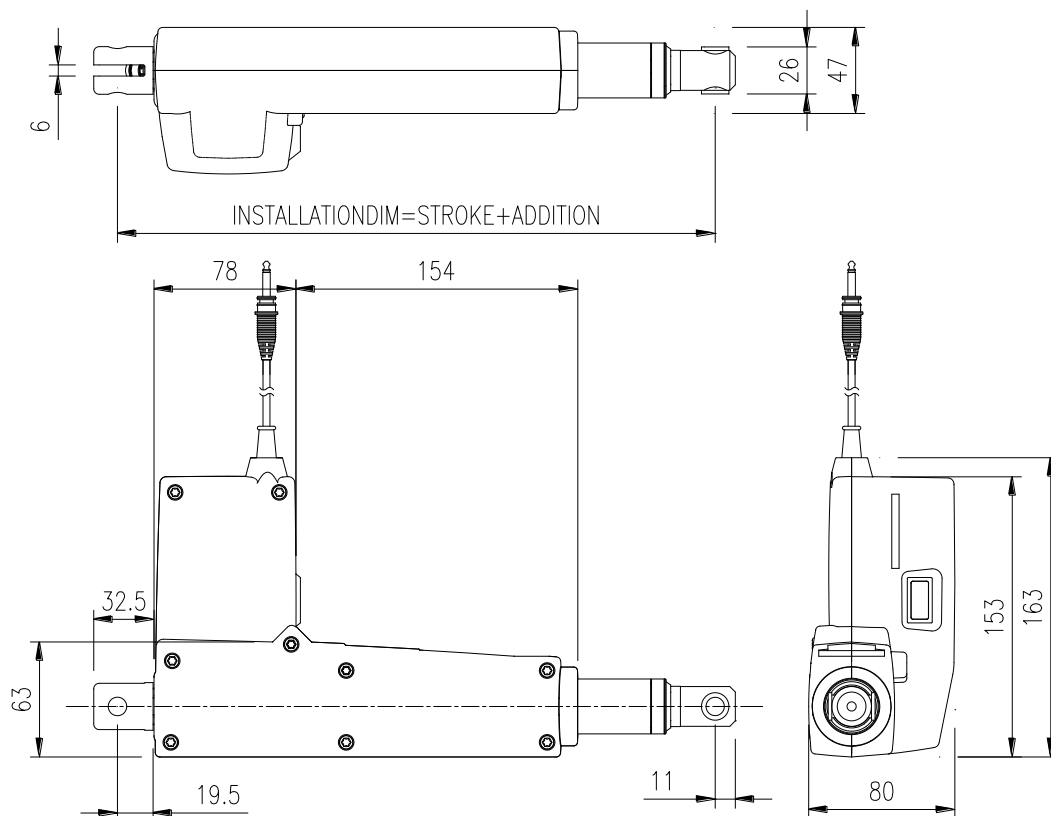
9 : 9.0 mm (Push 1,000N/Self-lock 500 N) ("Brake" function is suggested)

**ACTUATOR TYPE** LA31-BASIC

The 「★」 sign is for the special specification.

Specifications are subject to change without prior notice. It is the responsibility for the product users to determine the suitability of LINKAN A/C products for a specific application. LINKAN A/C will be responsible for replacing/ repairing defective products covered by the warranty if promptly returned to the factory. We won't undertake any responsibility except repairing.

## Dimension :



## Back direction: (Direction of installation)

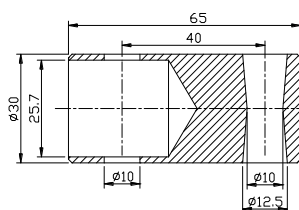
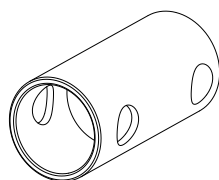
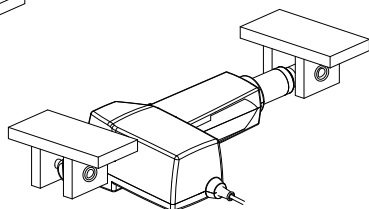
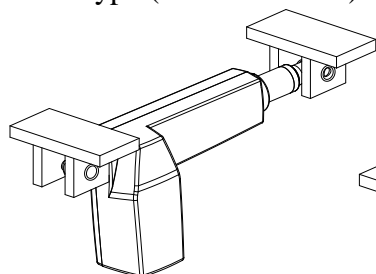
### accessory

V type (Vertical install)

H type (Horizontal install)

## Option for Quick Release

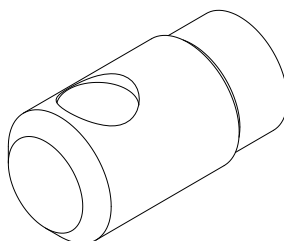
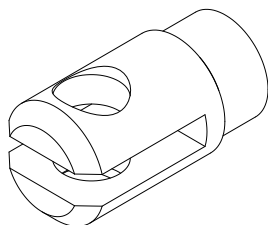
(Extended sleeve for the back fixture)



## Rod eye:

With Groove

Without Groove



## LA31 Installation Dimension

Actuator Stroke (mm)	100	150	200	250	300
Basic Installation Dimension (mm)	288	323	373	423	473
Stretch Stroke (mm)	388	473	573	673	773

## LA31 Installation Dimension for Q function

Actuator Stroke (mm)	100	150	200
Basic Installation Dimension (mm)	377	427	477
Stretch Stroke (mm)	477	577	677

### Notice (Installation) :

- ◆ If the stroke of LA31 is less than 100 mm, all basic installation dimensions are 288 mm.
- ◆ When the load is over 4,000 N, the longest standard stroke is 250 mm.
- ◆ LA31 with quick release (Q) function: Basic installation dimension = Stroke + 277 mm

### Notice (for the installation of Q function)

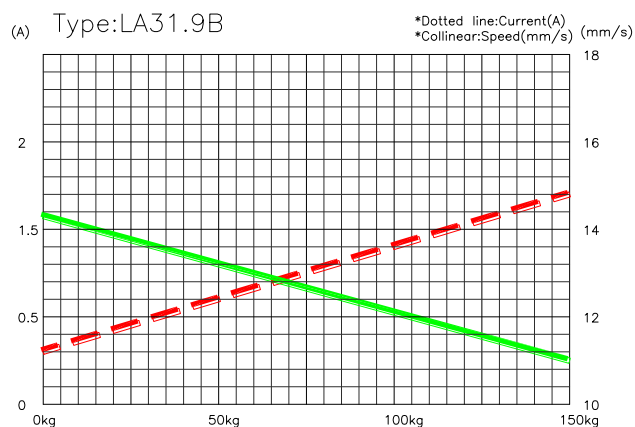
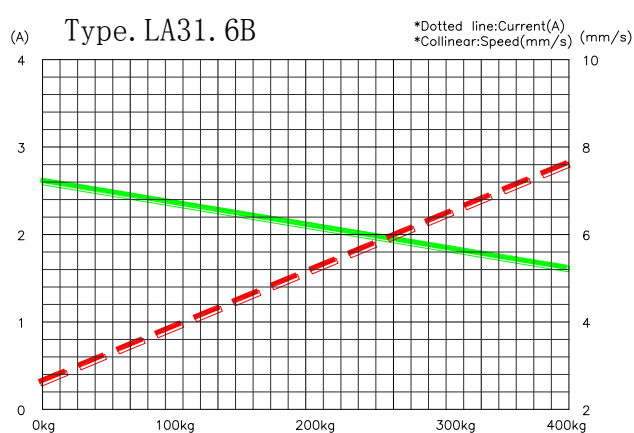
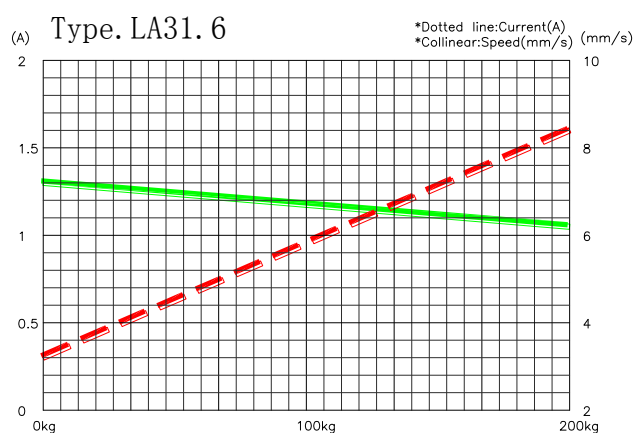
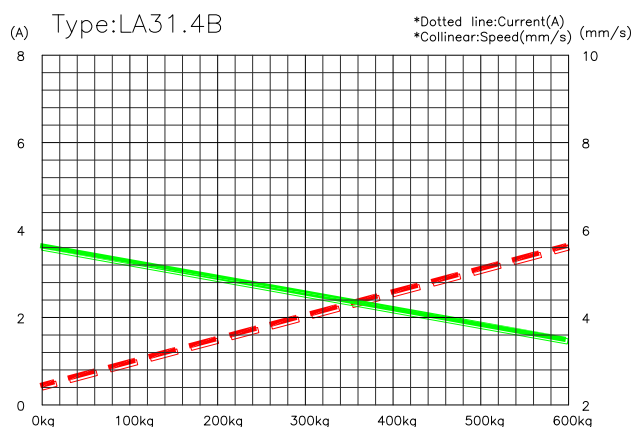
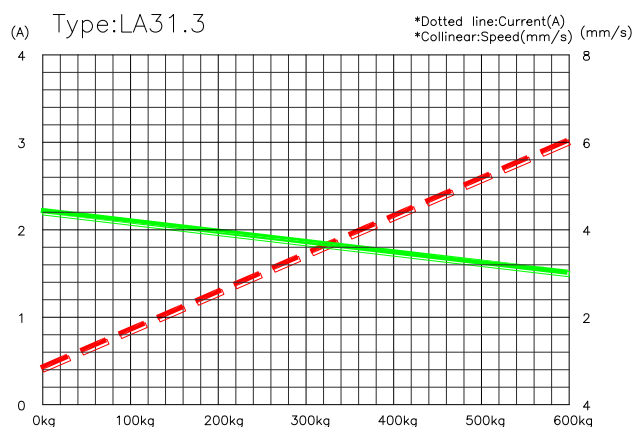
- ◆ The effective stroke length for Quick Release is (Stroke- 10 mm).  
E.g. Actuator with quick release is equipped with 150 mm stroke length. The effective stroke length for this type is 140 mm.
- ◆ When LA31 actuator is equipped with quick release function, Brake (B) has also to be included, and the spindle shall be with 6mm pitch. The minimum load to activate the quick release is 35 kg.
- ◆ LA31 is not suitable for the “Pull” application. Only “Push” application is suggested.
- ◆ The extended sleeve for the back fixture is suggested for quick release function.

### Data & Graph:

Type	Pitch (mm)	Max load 【N】		Typical Current 【A】	Typical speed 【mm/s】		Self lock Max 【N】
		Push	Pull	Full load	Unloaded	Full load	Push
Standard 24 V motor (Duty Cycle : 10% )							
LA31.3	3	6,000	4,000	3.0	4.5	3.7	6,000
LA31.4B	4	6,000	4,000	3.3	6.2	4.1	6,000
LA31.6	6	4,000	4,000	3	9.4	6.5	2,000
LA31.6BQ	6	4,000	4,000	3	9.4	6.5	4,000
LA31.6B	6	4,000	2,000	3	9.4	6.5	4,000
LA31.9B	9	1,500	1,500	4.5	14.3	11	1,500
Fast 24 V motor (Duty Cycle : 5% )							
LA31.3	3	6,000	4,000	4.0	5.8	4.2	6,000
LA31.4B	4	6,000	4,000	5.5	7.8	5.0	6,000
LA31.6	6	4,000	4,000	4.2	9.5	8.2	2,000
LA31.6B	6	4,000	4,000	4.2	9.5	8.2	4,000
LA31.9B	9	1,500	1,500	2.5	16.7	14.2	1,500

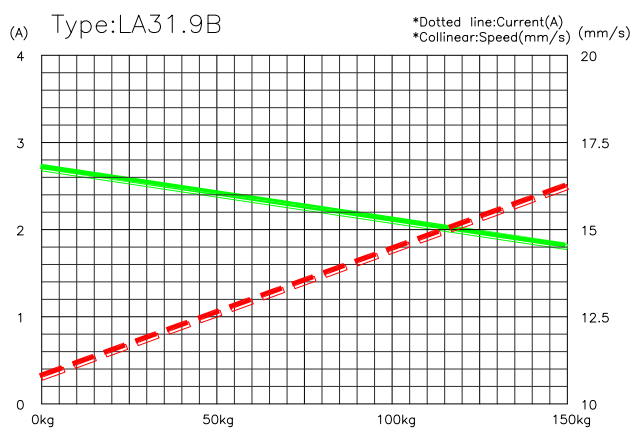
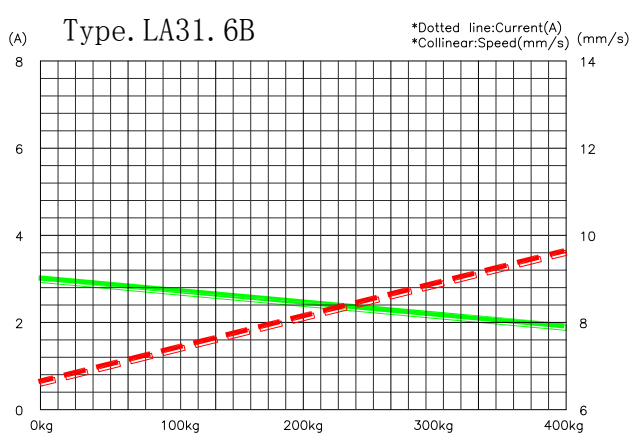
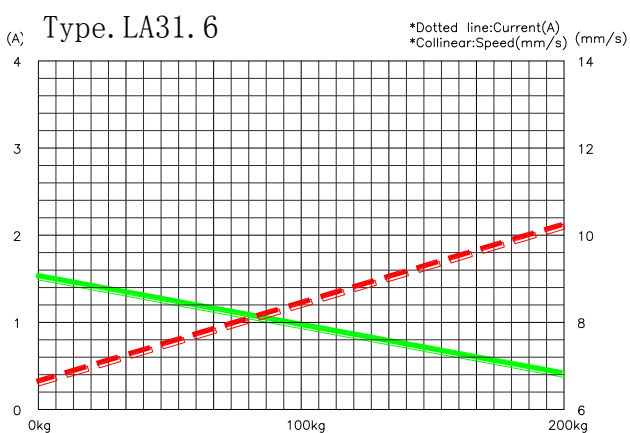
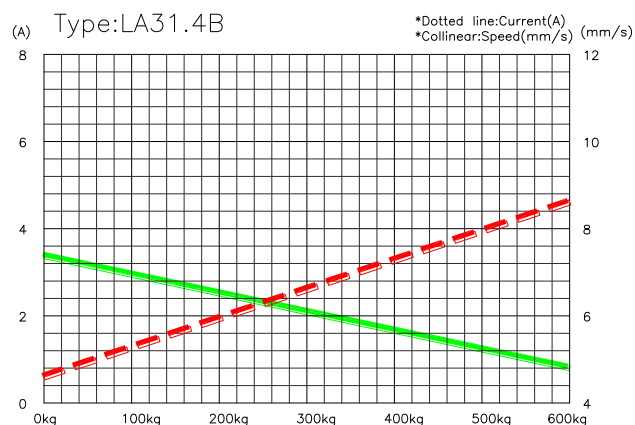
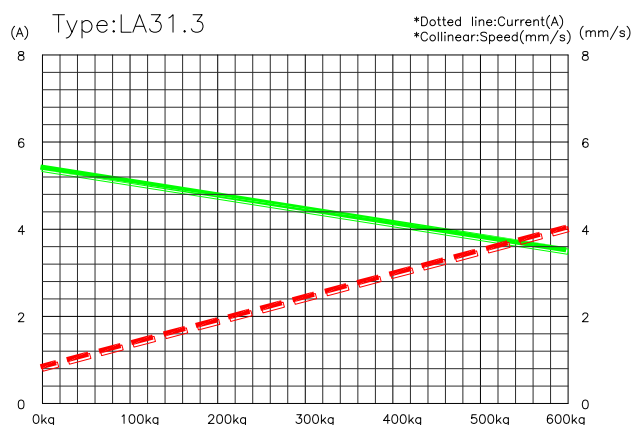
※The data above is with DC24V power supply. If you need the data with compatible control boxes, please contact LINKAN A/C R&D department.

Specifications are subject to change without prior notice. It is the responsibility for the product users to determine the suitability of LINKAN A/C products for a specific application. LINKAN A/C will be responsible for replacing/ repairing defective products covered by the warranty if promptly returned to the factory. We won't undertake any responsibility except repairing.



Specifications are subject to change without prior notice. It is the responsibility for the product users to determine the suitability of LINKAN A/C products for a specific application. LINKAN A/C will be responsible for replacing/ repairing defective products covered by the warranty if promptly returned to the factory. We won't undertake any responsibility except repairing.

## Fast 24V motor :



Specifications are subject to change without prior notice. It is the responsibility for the product users to determine the suitability of LINKAN A/C products for a specific application. LINKAN A/C will be responsible for replacing/ repairing defective products covered by the warranty if promptly returned to the factory. We won't undertake any responsibility except repairing.