



LA28 is a newly designed actuator for variety application. With a streamlined figure and intensified mechanical structure, the output performance is stable and quiet; therefore it is suitable for furniture, or for beauty, homecare, medical and rehabilitation areas.

Feature :

- 24 V DC permanent magnet motor.
- Thrust: 4,000~7,000 N.
- Built-in limited switches.
- Inner metal frame to protect motor and gears.
- Duty cycle: pitch 7 mm Max. 10% or 2 min. of continuous usage followed by 18 min. of rest; Pitch 3.5 mm Max. 5% or 1 min. of continuous usage followed by 19 min. of rest.
- Ambient temperature: +5°C to +40°C.
- Protection class: IP54.
- Color: Grey-white.

Option :

- LA28 can be equipped with a brake to increase the self-locking.
- Safety nut.
- Protection class: IP66 (not allowed to be in wash tunnels).
- Quick-Release Q function.
- Back fixture position 0° or 90°.
- Hall Sensor function.

The years of release : 2014

LA28 Ordering example :

LA28. 7 S B H Q-15 -100 + H J

TYPE OF PLUG

(Notice the plug on the control box)

J : JACK plug

D : 2-core DIN plug

5D : 5-core DIN plug

X : Without plug

BACK FIXTURE DIRECTION

(The direction of actuator installation)

H : Horizontal

V : Vertical

CABLE LENGTH

150 = 150 cm

200 = 200 cm

STROKE LENGTH

10 = 10 cm

15 = 15 cm

20 = 20 cm

25 = 25 cm

30 = 30 cm

QUICK RELEASE Q

(Only for 7 mm- pitch spindle. Quick release is for CPR, ensuring the bed to return to the original position quickly by manual start)

HALL SENSOR

H : Single Hall Sensor

BRAKE

B : (Increase self-locking power to prevent the bed from sliding down)

STOPPER

S : End Stopper

(The end stopper which is installed on the spindle is to avoid the piston travelling out of the housing in case limit switches are out of order)

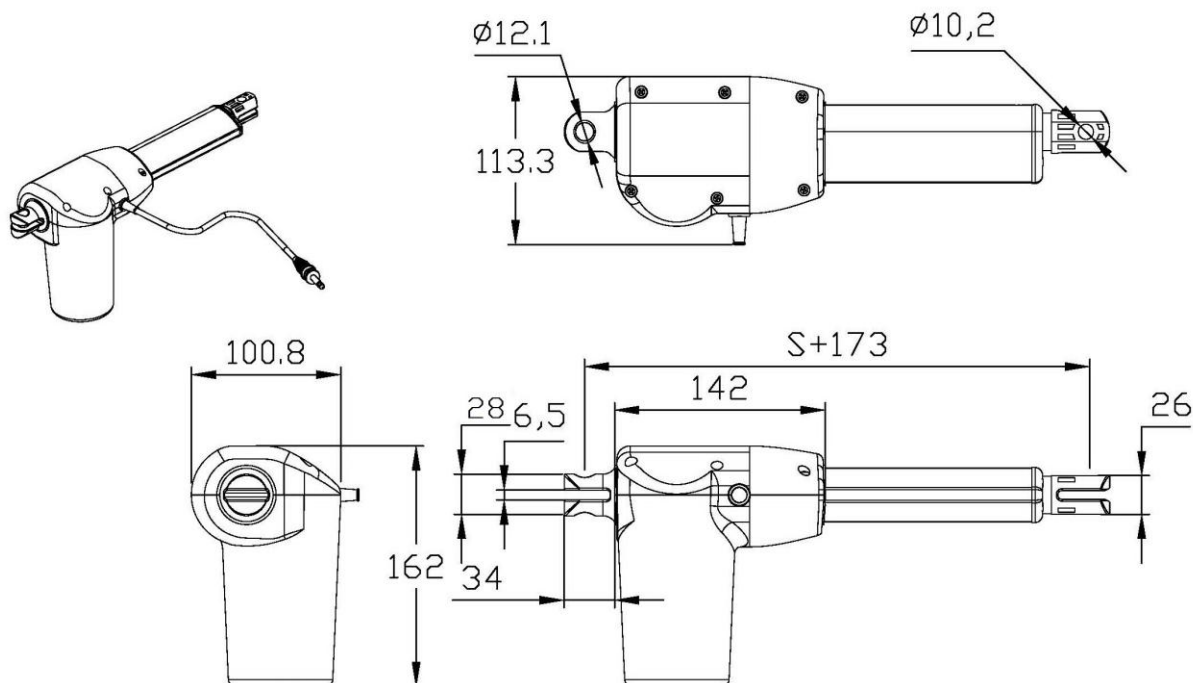
SPINDLE PITCH

35 : 3.5 mm (Push 7,000N/Self-lock 7,000 N)

7 : 7.0 mm (Push 4,000N/Self-lock 2,000 N)

(When choosing LA28.7Q, the brake B is required.)

ACTUATOR TYPE LA28-BASIC



LA28 Standard Installation Dimension :

Actuator Stroke (mm)	100	150	200	250	300
Basic Installation Dimension (mm)	288	323	373	423	473
Stretch Stroke (mm)	388	473	573	673	773

LA28 (With End Stopper) Installation Dimension :

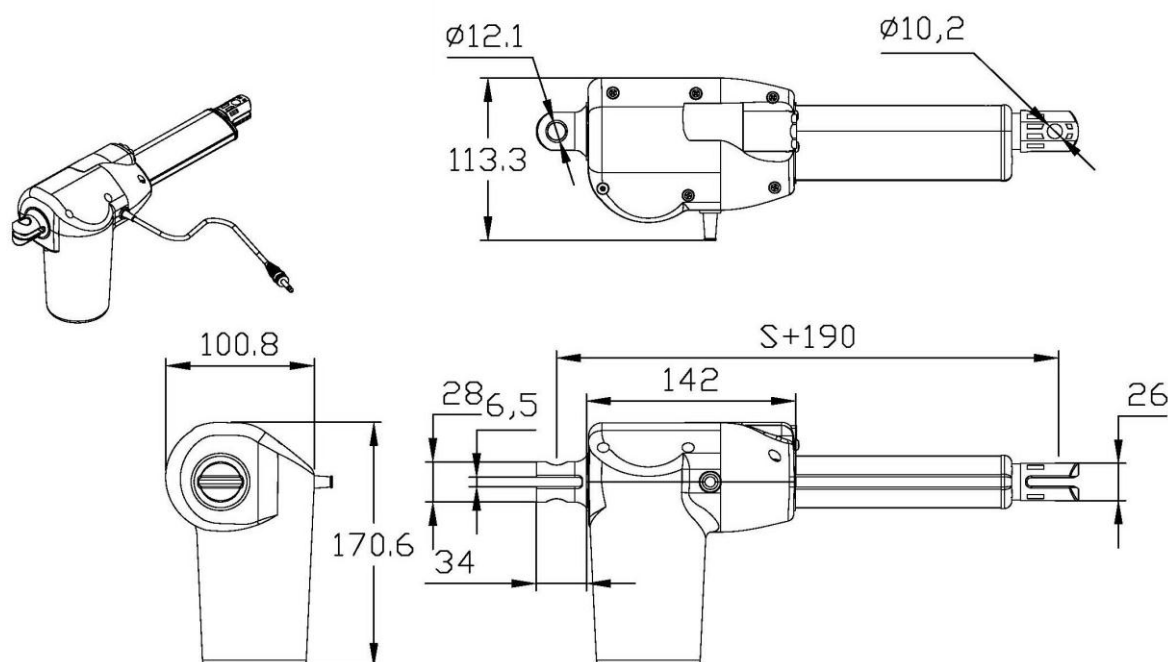
Actuator Stroke (mm)	100	150	200	250	300
Basic Installation Dimension (mm)	305	340	390	440	490
Stretch Stroke(mm)	405	490	590	690	790

- ◆ If you insist on the standard installation size, the stroke will be 10mm less, please contact the technical department for details.

Notice

- ◆ When the load is over 4,000N, the recommended max. stroke length is 250mm.

Dimension for quick release (Q) function



Installation Dimension for quick release (Q) function

Actuator Stroke mm	100	150	200
Basic Installation Dimension (mm)	305	340	390
Stretch Stroke mm	405	490	590

Notice (for the installation of quick release (Q) function)

- ◆ When LA28 actuator is equipped with the quick release function, Brake (B) is required, and the spindle is with 7 mm pitch. The 35 kg load is required to activate the quick release.
- ◆ LA28 with the quick release function shall not be used in “Pull” application. Only “Push” application is allowed.
- ◆ The extended sleeve of the back fixture is suggested for the quick release function.

LA28 Data

Type	Max Load [N]		Typical Amp.	Typical Speed [mm/s]		Self Lock [N]
	Push	Pull		No Load	Full Load	
LA28.35	7,000	7,000	3.61	6	3	7,000
LA28.7B	4,000	2,000	3.4	10.5	5.76	4,000